

## HAREWOOD CRESCENT, ELM TREE, STOCKTON-ON-TEES, TS19 0SZ



- ▲ Three Bed Semi
- ▲ Attractive Cul-De-Sac
- ▲ Close to Local Schools
- ▲ Recently Fitted Kitchen/Diner
- ▲ Improved Four Piece Bathroom
- ▲ Garage and Good Parking
- ▲ Enclosed Rear Garden

**£190,000**

[www.michaelpoole.co.uk](http://www.michaelpoole.co.uk)

**Michael Poole**  
sales | lettings | auctions





This is a Perfect Family Home in an Attractive Cul-de-Sac within Elm Tree, Shops, Schools & Colleges are all on the Doorstep & the Property has Undergone Substantial Improvements Over Recent Years.

The accommodation flows in brief, entrance hall, wc, lounge, kitchen/diner, three bedrooms and bathroom.

**ENTRANCE HALLWAY** - Via double glazed door into a hallway with staircase to upper floor and radiator, door access to cloak/wc and lounge.

**CLOAKS/WC** - 1.80m x 0.98m (5'11" x 3'3")  
Double glazed window to front aspect, low level wc, pedestal hand basin and radiator.

**LOUNGE** - 3.58m x 4.36m (11'9" x 14'4")  
Double glazed window to front aspect and radiator.

**KITCHEN/DINER** - 3.08m x 4.72m (10'1" x 15'6")  
Double glazed window to rear aspect, French doors, storage cupboard, radiator and recently installed fitted kitchen.



**TO VIEW:** Tel: 01642 355000  
17 High Street, Stockton-on-Tees, Cleveland, TS18 1SP

[www.michaelpoole.co.uk](http://www.michaelpoole.co.uk)

**Michael Poole**  
sales | lettings | auctions





**FIRST FLOOR**

**LANDING** Doors leading to bedrooms and bathroom/wc and storage cupboard.

**BEDROOM ONE - 4.60m x 3.38m (15'1" x 11'1")**  
Double glazed window to front aspect and radiator.

**BEDROOM TWO - 2.80m x 2.82m (9'2" x 9'3")**  
Double glazed window to rear aspect and radiator.

**BEDROOM THREE - 1.84m x 2.80m (6' x 9'2")**  
Double glazed window to rear aspect and radiator.

**BATHROOM/WC - 1.90m x 1.96m (6'3" x 6'5")**  
Low level WC, panelled bath, shower cubicle, pedestal hand basin and radiator.

**EXTERNAL**

Rear garage, two drives and enclosed garden to rear.



**Council Tax Band:** C      **Tenure:** Freehold

**TO VIEW:** Contact our Stockton office on  
Tel: 01642 355000



**TO VIEW:** Tel: 01642 355000  
17 High Street, Stockton-on-Tees, Cleveland, TS18 1SP

[www.michaelpoole.co.uk](http://www.michaelpoole.co.uk)







**TO VIEW:** Tel: 01642 355000  
17 High Street, Stockton-on-Tees, Cleveland, TS18 1SP

[www.michaelpoole.co.uk](http://www.michaelpoole.co.uk)

**Michael Poole**  
sales | lettings | auctions





**TO VIEW:** Tel: 01642 355000  
17 High Street, Stockton-on-Tees, Cleveland, TS18 1SP

[www.michaelpoole.co.uk](http://www.michaelpoole.co.uk)

**Michael Poole**  
sales | lettings | auctions



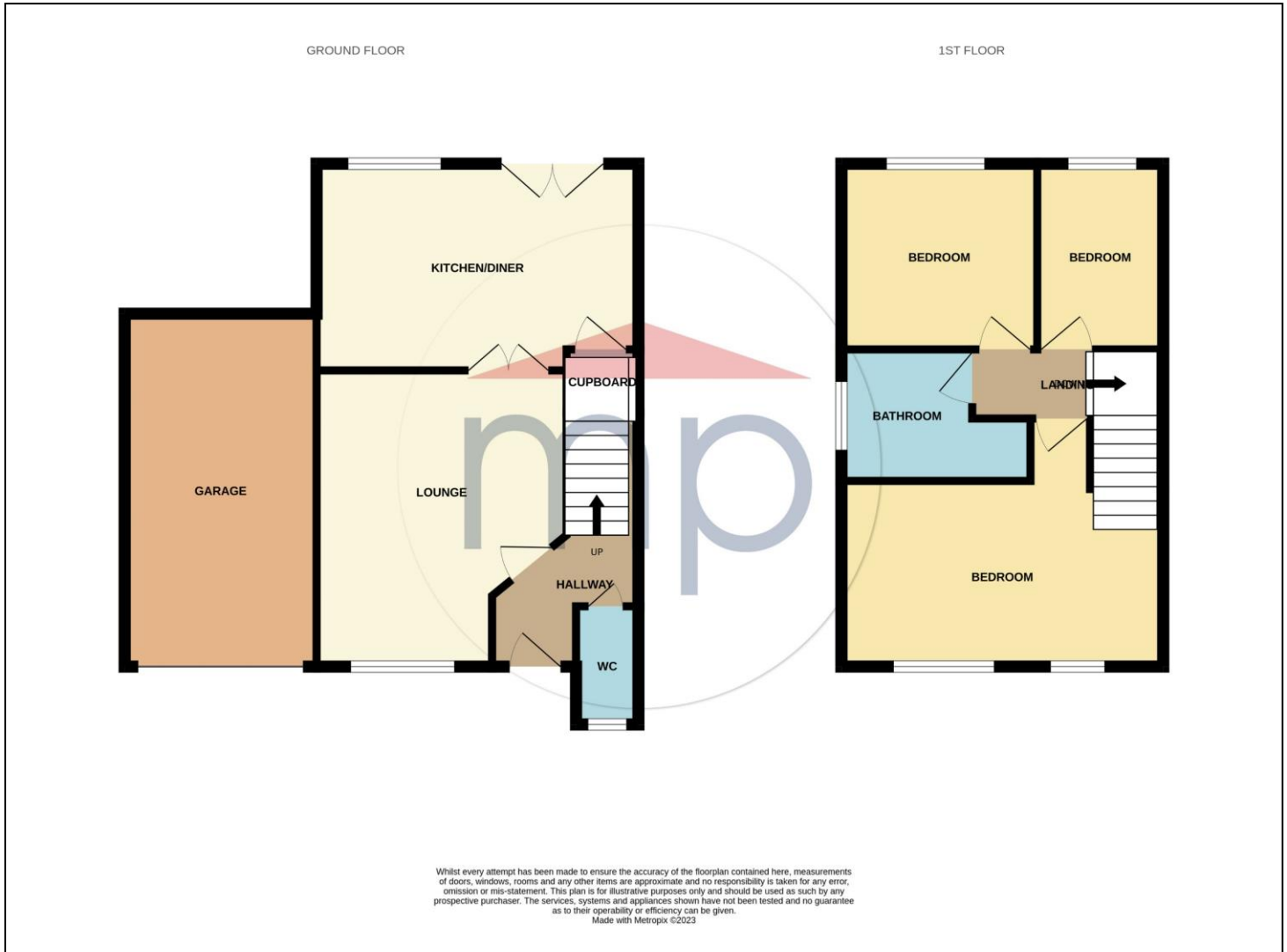


**TO VIEW:** Tel: 01642 355000  
17 High Street, Stockton-on-Tees, Cleveland, TS18 1SP

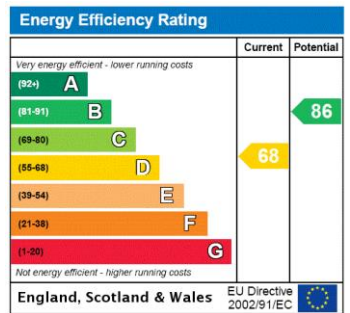
[www.michaelpoole.co.uk](http://www.michaelpoole.co.uk)

**Michael Poole**  
sales | lettings | auctions





The information provided about this property does not constitute or form part of an offer or contract, nor may it be regarded as representations. All interested parties must verify accuracy and your solicitor must verify tenure and lease information, fixtures and fittings and, where the property has been recently constructed, extended or converted, that planning/building regulation consents are in place. All dimensions are approximate and quoted for guidance only, as are floor plans which are not to scale, and their accuracy cannot be confirmed. Reference to appliances and/or services does not imply that they are necessarily in working order or fit for the purpose. We offer our clients an optional conveyancing service, through panel conveyancing firms, via MWU and we receive on average a referral fee of one hundred and thirty pounds, only on completion of the sale. If you do use this service, the referral fee is included within the amount that you will be quoted by our suppliers. All quotes will also provide details of referral fees payable.



**TO VIEW:** Contact our Stockton Office on Tel: **01 642 355000**  
 17 High Street, Stockton-on-Tees, Cleveland, TS18 1SP